

CATÁLOGO DE FAUNA INVERTEBRADA



ABEJA



ABEJORRO



MOSCA



AVISPA



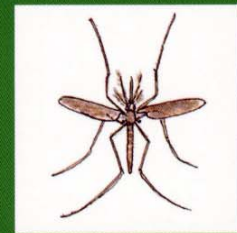
SARANTONTÓN



CHINCHE



ESCARABAJO



MOSQUITO



TIJERETA



GRILLO



HORMIGA



LIBÉLULA



**MARIPOSA
DE LA COL**



MONARCA



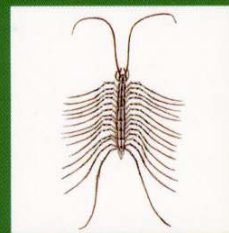
SALTAMONTES



CARACOL



ARAÑA



CIEMPIÉS



MILPIÉS



**COCHINILLA
DE TIERRA**

CATÁLOGO DE FAUNA VERTEBRADA (I)



ABUBILLA



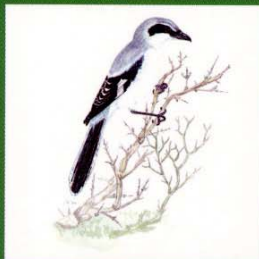
ALPISA



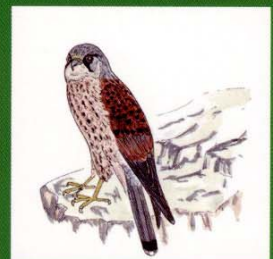
CANARIO
DEL MONTE



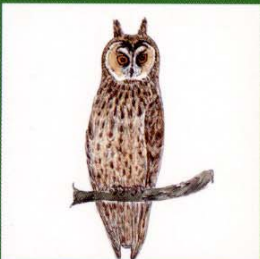
CAPIROTE



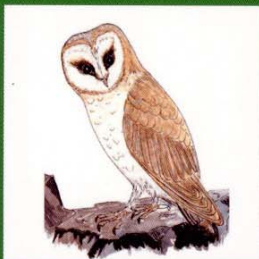
ALCAUDÓN REAL



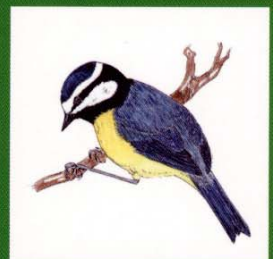
CERNÍCALO



BÚHO CHICO



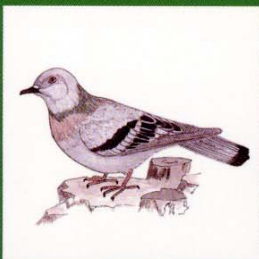
LECHUZA



HERRERILLO



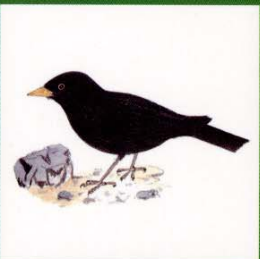
VERDECILLO



PALOMA BRAVÍA



TÓRTOLA



MIRLO



HORNERO



VERDERÓN

CATÁLOGO DE FAUNA VERTEBRADA (II)



VENCEJO - AVURRIÓN



PETIRROJO



PINTO - JILGUERO



PINZÓN



GORRIÓN - PALMERO



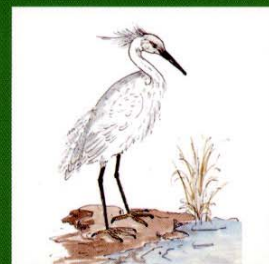
TROMPETERO



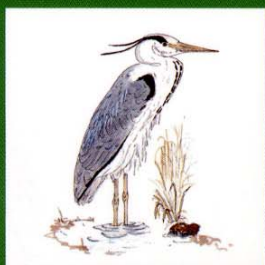
POLLA DE AGUA



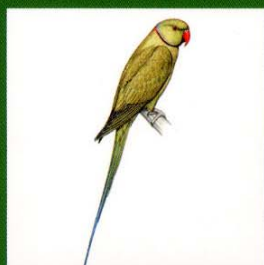
ASTRILDA



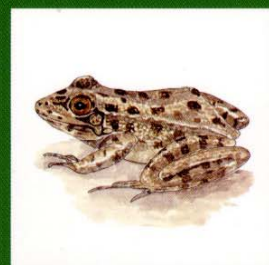
GARCETA



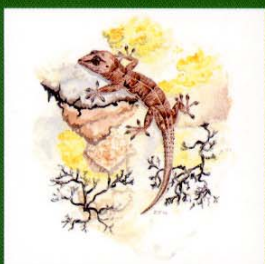
GARZA REAL



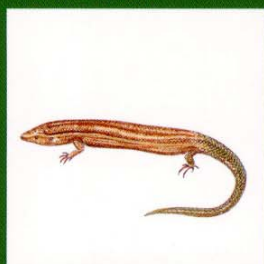
COTORRA DE KRAMER



RANA COMÚN



PERENQUÉN



LISA



LAGARTO CANARIÓN